

# 825. NEWS



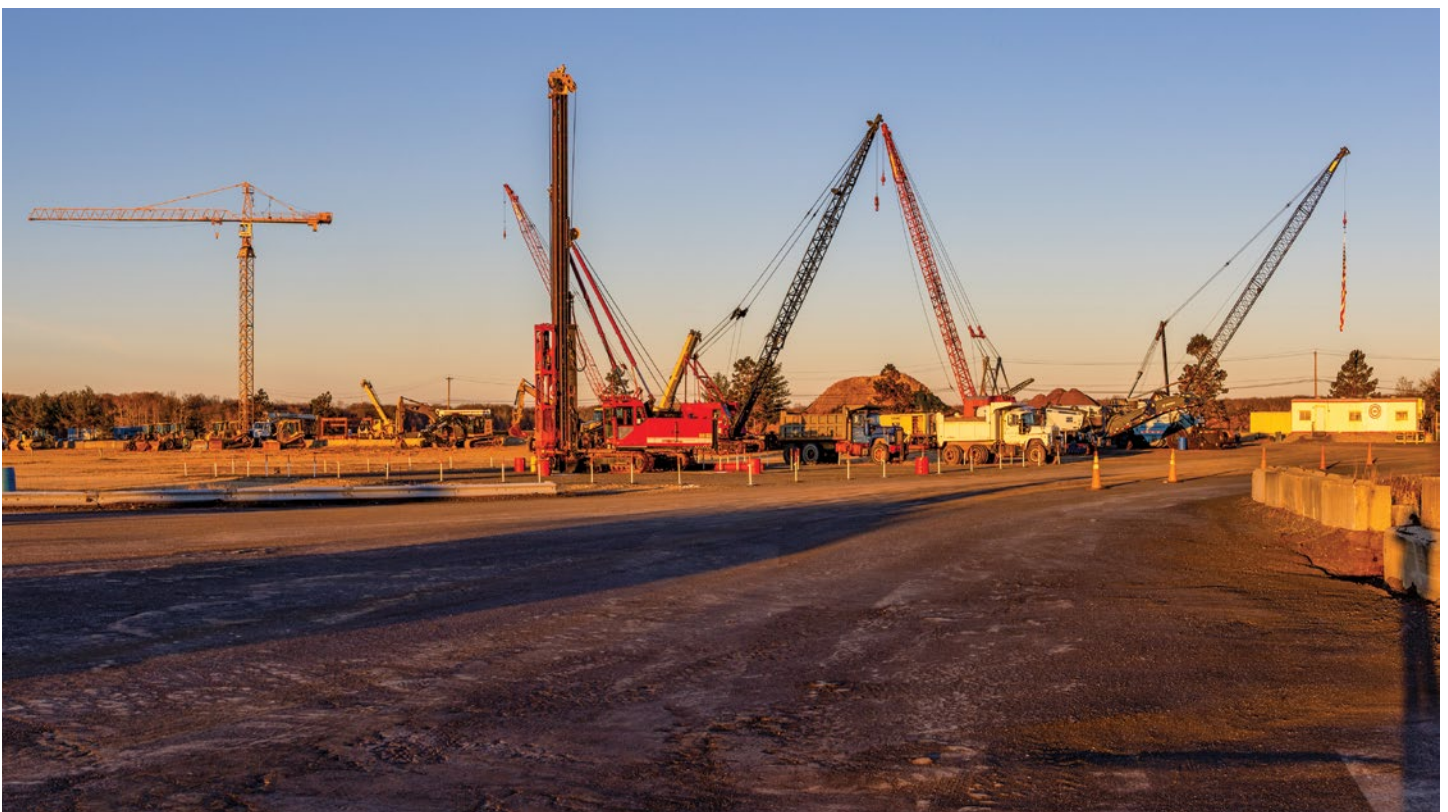
|                              |         |
|------------------------------|---------|
| View From The Top .....      | P 2     |
| Infrastructure To Come ..... | P 3     |
| Winter Training.....         | P 4 & 5 |
| Holiday Party .....          | P 9     |
| 2022 Advertising.....        | P 10    |

SERVING THE LOCAL 825 MEMBERS OF THE INTERNATIONAL UNION OF OPERATING ENGINEERS

VOL. 12 ISSUE 2

## Training centers weather prolonged cold snap

Members stick with it through one of the coldest winters in years



A new dawn breaks over the Dayton Training Center. There is a chill in the air. Soon apprentices, members and instructors will arrive, turning this quiet scene into a busy training ground. (See photos inside, pages 4 and 5). Up to 70 participants plus instructors practice

drills and skills. The STEAM program still simmers, with 15 more trainees added in 2021. Many of these were already working in the field before year end, thanks to the training staff. Training and preparation is what it's all about.

# CALENDAR

Dates are subject to change. If changes are made they will be posted to the IUOE825.ORG website.

## MARCH

### 7 - District 1

Aloft Mount Laurel  
558 Fellowship Road, Mt. Laurel

### 9 - District 2 Meeting

Holiday Inn, 287otel  
199 Smith Road, Parsippany

### 13 - Daylight Savings begins, set clocks forward

### 14 - District 3 Meeting

Sheraton Parsippany Hotel  
199 Smith Road, Parsippany

### 17 - St. Patrick's Day

### 20 - Spring begins District 4

NY Training Center  
96 Bates Gates Road, New Hampton, NY

## APRIL

### 1 - Scholarship applications due

### 4 - District 1 Meeting

Hammonton Fire Co. Station 2  
51 North White Horse Pike, Hammonton, NJ

### 6 - District 2 Meeting

Holiday Inn  
160 Frontage Road, Newark

### 11 - District 3 Meeting

Holiday Inn  
1000 International Drive, Mt. Olive, NJ

### 13 - District 4 Meeting

NY Training Center  
96 Bates Gates Road, New Hampton, NY

### 15 - Good Friday; Passover

### 17 - Easter

### 22 - Earth Day

## VIEW FROM THE TOP

Greg Lavee, Business Manager



## Infrastructure funds begin to flow

As winter fades and we look toward spring, the first wave of infrastructure projects are already gearing up.

The Salem County Wind Port broke ground late last year and now hosts many of our members on its worksite. It is the largest investment in Salem County in decades and will serve as a central component in the state's energy plan. Ultimately, it will provide staging, assembly and manufacturing activities to support the industry along the coast.

### North Portal Bridge

Construction on the North Portal Bridge is set to begin by June. The new bridge will double the height of the existing one. Including its approaches, the new bridge will span nearly 2.5 miles of the Northeast Corridor. This work is expected to keep our members busy for five years, with completion expected by late 2027.

A \$143 million funding package was recently announced to build a replacement bridge over the Hackensack River along Route 3 in the Meadowlands.

These projects represent just the beginning of a tidal wave of infrastructure spending like we've never seen. This is why our training and education is so important. We must continue to provide the best trained and most knowledgeable heavy equipment operators available any-

where to meet any and all future challenges.

Congratulations to all the apprentices and members who participated in winter classes this season. Photos of them and their training appear on pages 4 and 5.

### Semiannual meeting

After two years of weathering the global pandemic, Local 825 has emerged as healthy as ever. As of January, our pension fund is fully funded and all our funds are in solid shape. See more semiannual meeting coverage on page 3.

### Three-year elections

We are entering election season to vote on Local 825's officers. Nominations will be accepted until June 6 and voting will take place on August 13. Complete information on the nomination and election process is covered in this issue on pages 6 through 8.

Also upcoming, April 1 is the deadline to submit an application for one of Local 825's ten scholarship awards. As in past years, Local 825 awards ten scholarships worth \$10,000 each over four years. Don't miss this opportunity if you have a child or grandchild graduating high school this year. See our website for eligibility information and to download the application.

Spring is around the corner. Stay healthy and safe as we await longer days and warmer weather.

## Contact Information

**Local 825 Headquarters**  
65 Springfield Avenue, 3rd FL  
Springfield, NJ 07081  
(973) 671 - 6900  
(973) 921 - 2918 FAX

**District Offices:**  
3242 Route 206  
Building A Unit 6  
Bordentown, NJ 08505  
Tel. 856-470-1480  
Fax 856-470-1485

96 Bates Gates Road  
New Hampton, NY 10958  
845-674-9020 - Phone  
845-674-9025 - Fax

**Health & Welfare office**  
65 Springfield Avenue, 2nd FL  
Springfield, NJ 07081  
(973) 671 - 6800  
(973) 921 - 0706 FAX

96 Bates Gates Roads  
Suite 70  
New Hampton, NY 10973  
(845) 374-2559  
(845) 374-2564 FAX

**NJ Training Center**  
338 Deans Rhode Hall Rd.  
Dayton, NJ 08810  
(732) 798-2170  
(732) 798-2175 FAX

**NY Training Center**  
Wawayanda location  
96 Bates Gates Road  
New Hampton, NY 10958  
845-673-3154 - Phone  
845-674-9025 - Fax

**ELEC Office**  
65 Springfield Avenue, 2nd FL  
Springfield, NJ 07081  
(973) 630-1010  
(973) 630-1013 FAX

**Union Plus®**  
(Offered through Wells Fargo  
Home Mortgage)  
Debra Botulinski  
(908) 608-2013



# First semiannual meeting of 2022, drive-in style

## Cars and trucks fill training center parking lot to participate

**T**he first semiannual meeting of 2022 took place under the stars on January 3, drive-in-movie style, at the New Jersey Training Center in Dayton.

Members arrived early for parking spots facing the front windows, where Business Manager Greg Lavee, President John Wood and the officers were assembled inside to give their reports.

Members listened in on FM band 107.7 as John Wood opened the meeting and Greg



**Members listen in their cars and trucks**



**Business Manager Greg Lavee broadcasts his report over FM band 107.7**

gave his business manager's report.

Despite the lingering pandemic, the news was positive. Greg reported that the Pension Fund is now fully funded, which will allow the union to consider raising benefits, while remaining healthy in the green zone near the 100 percent funding level.

The Profit Sharing Fund (formerly called the Annuity Fund) reported that four individual accounts have reached the \$1 million level. 1984 was the first year of the Annuity Fund and these first four members have now realized the dreams of retiring as millionaires.

## Report important changes

Greg reminded members of their responsibility to report any life-changing events to the funds so they can update status of dependents, beneficiaries and other changes. All too often, the funds office encounters ugly family situations because beneficiaries have not been updated.

## Infrastructure funding

The historic infrastructure bill and its multi-year funding mechanism will have long-lasting benefits to both members and the economy. It provides \$110 billion for roads and bridges; \$40 billion for bridges; \$39 billion for public transit; \$66 billion for passenger rail; \$55 billion for water infrastructure; \$65 billion to expand broadband; \$50 billion for resiliency; \$21 billion for superfund cleanups; \$25 billion for airports; \$17 billion for ports and \$16 billion for "major projects."

As Greg has said previously, this scale of funding is "like nothing we've ever seen" and will provide long-lasting employment for members.

The next semiannual meeting is scheduled for June 6. It is hoped that this meeting will resume in-person meetings at the Hilton East Brunswick.

# Is this your family's year for a scholarship?

**O**ver the last several years you've seen family after family win scholarships to help pay their child's college tuition. Pictured below are one of ten winners from each of the last five years.

Maybe this is the year YOU will be eligible. Is someone in your family completing their senior year in high school ... a child or grandchild?

With inflation on the rise and the cost of education already high, you owe it to yourself to get all the help you can. It's worth \$10,000 over a four-year period.

Applications are available on the Local 825 website - [www.iuoe825.org](http://www.iuoe825.org) - or by calling the Springfield Union hall. Applications are due back Friday April 1, 2022.

Submissions will be reviewed and judged by the Labor Education Center at Rutgers University.

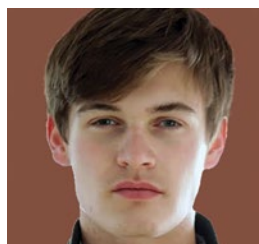
Children of our members are also eligible for scholarships from several other Central Labor Councils and Building Trade Councils. As we get those applications, they are also posted on our web site.



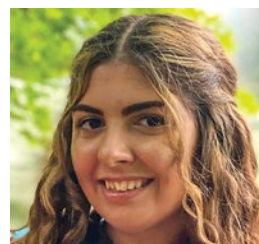
**2017: Colette Bilynski**



**2018: William Goldsborough**



**2019: Carson Becker**



**2020: Candida Migueis**



**2021: Ryan Alves**



# Intrepid apprentices, members face down winter's wrath

## Training classes keep everyone busy during cold spell

**W**inter training classes began as scheduled on January 3 and continued as temperatures dropped through the week. It was a colder January than the prior year but that didn't slow training. At any one time, between 60 and 70 apprentices, members and instructors went about their business, unfazed by the weather.

Classes continue into mid-March and include: (New Jersey) 360 Forklift, GPS Dozer, Bauer/Casagrande Drill, Basic Crane Class, Basic Combo, Basic Dozer, Basic Excavator, Paving Classes, including Miller, Paver, Black-top Roller and Transfer Machine, Welding Class and CDL Prep Class; (New York) Utility Class, GPS Dozer, GPS Excavator, Milling Machine and Paving Machine.

## New Equipment

In a continuing effort to offer the latest, most relevant training, the following new equipment has been added:

- Cat CB-54B asphalt roller (NJ);
- Cat 306CR mini excavator for utilities (NY);
- 1 utility truck with a lube tray for teaching maintenance.

## Instructors

We give a shoutout to the training instructors at both centers, including:

Bobby Lane, 360 Forklift; Pat Muscatell, Bauer/Casagrande; Chris Szpila & Joe Glova, Basic Crane; Bucky Rocco & Jared McCaffery, Basic Combo; Matt Walker, Basic Dozer; Michael Tufaro, Basic Excavator; Tommy Lewicki & Matt Campisi, CDL Prep Class; Matt Devine & Dan Seig, GPS. Paving Classes are being instructed by: Eric Anderson & Glenn Horishny, Paver; Jimbo Beslanovitz & Pablo Pereyra, Milling; Jeff Weiler, Transfer; Joe Graham, Asphalt Roller; Vic Grigoriew, Welding Class. At the NYTC: Craig Boyd, site coordinator; Chad Roth, GPS; Terrence O'Brien Jr., Utility; Chris Delaney, Paver/Roller; Ricky Beniulis; Pete Steele, Forklift/Mechanic.







# TRAINING CENTER CALENDAR

[www.facebook.com/iuoe825Training](http://www.facebook.com/iuoe825Training)

## NEW JERSEY TRAINING CENTER

(732) 798-2170 (All classes start at 7 a.m. unless noted otherwise)

### 8-Hour Hazmat Refresher

Sat. March 12; Sat. March 26

Sat. April 9; Sat. April 23

Sat. May 21; Sat. June 25

### CCO – 4 Study Saturdays

Signup and TSS

Sat. March 5 & Sat. April 2

TWR at 7 a.m./TLL at 8 a.m.

Sat. March 12 & Sat. April 9

OVR at 7 a.m./LBT at 8 a.m.

Sat. March 19 & Sat. April 16

LBC & Review

Sat. March 26 Sat. April 23

Written Test at 7 a.m.

Sun. March 27 & Sun. April 24

### Signal Person Class

Sat. May 7

### Rigger Class

Sat. May 14

**OSHA 30** – Must attend all four days to complete

### March 15 through 1

Tues. March 15 – MOD 1

Wed. March 16 – MOD 2

Thurs. March 17 – MOD 3

Fri. March 18 – MOD 4

### April 12 through 15

Tues. April 12 – MOD 1

Wed. April 13 – MOD 2

Thurs. April 14 – MOD 3

Fri. April 15 – MOD 4

**40-Hour HAZMAT Class** – Must attend all five days

Mon. March 21 through Fri. March 25

Mon. April 18 through Fri. April 22

## NEW YORK Training Center

(845) 673-3154 (All classes start at 7 a.m. unless noted otherwise)

### 8-Hour HAZMAT Refresher

Sat. March 12; Sat. March 26

**OSHA 10** – Must attend both days to complete

Dates to be announced

**OSHA 30** – Must attend four days to complete

Dates to be announced

**40-Hour HAZMAT Class** – Must attend five days

Dates to be announced

**Asbestos – Initial Class** – Must attend all 4 days

Tues. March 22 through Fri. March 25

Limited space Available – contact the New York Training Center for availability

Please contact the New York Training Center to put your name on the list for a class or certification you need to take. If you do not see the class listed above, let them know and once we have enough names for a class, members will be notified.

## Local 825 International Union of Operating Engineers Combined Notice of Nomination and Election

### NOTICE OF NOMINATION

Pursuant to the International Union of Operating Engineers ("IUOE") Constitution and Article XIII of IUOE Local 825 Bylaws, notice is hereby given to all members of Local 825 that nomination and election dates have been established with respect to the following Local 825 offices and positions: Business Manager, President, Vice President, Recording-Corresponding Secretary, Financial Secretary, Treasurer (all of whom, by virtue of their office, shall also serve on the Executive Board and as delegates to the General International Convention), four (4) Executive Board Members, (one from each of the four (4) Local 825 Districts), three (3) Trustees, three (3) Auditors, a Conductor, and a Guard.

Pursuant to Article XIII § 10 of the Local 825 Bylaws, the Election Committee has chosen Global Election Services, Inc. ("GES") to supervise the Election, including with respect to the nominating process.

Nominations will take place at Local 825's Semi-Annual Meeting on Monday, June 6, 2022 at 7:00 p.m. at the Hilton East Brunswick, 3 Tower Center, East Brunswick, New Jersey 08816.

Voting has been scheduled for Saturday, August 13, 2022 at the times and polling places identified below.

The term of each office or position is three (3) years commencing no later than September 1st unless an earlier installation is otherwise directed by the General President.

### DEFINITION OF "GOOD STANDING"

Only members in good standing may nominate, second, vote or be eligible to run for an office or position. "Good standing" is defined as having paid all dues to Local 825 within thirty (30) days after such become due and payable, as evidenced by the member's proper dues receipt or other evidence indicative of good standing. No member whose dues have been withheld by the member's employer for payment to Local 825 pursuant to the member's voluntary authorization provided for in a collective bargaining agreement shall be declared ineligible to vote or for candidacy for office by reason of alleged delay or default in the payment of dues.

### ELIGIBILITY FOR OFFICE

No member shall be eligible for election, be elected, nor hold office unless he or she has been a member of Local 825 for two years immediately prior to the election. Members of the present Election Committee are likewise not eligible for office.

**Officers or Positions other than the Business Manager:** No member may be nominated for President, Vice-President, Recording-Corresponding Secretary, Financial Secretary, Treasurer, Trustee, Auditor, Conductor or Guard unless such member has been in continuous good standing in Local 825 for not less than one (1) year immediately preceding the month of nominations – that is, for the time of June 1, 2021 through May 31, 2022. In addition to meeting the requirement of one-year continuous good standing, to be nominated for District Executive Board Member, one must have been affiliated with the District within the meaning of Article IV Section 5A or 5B for a least one (1) year immediately preceding the month of nominations.

**Business Manager:** No member shall be eligible for nomination or election for the position of Business Manager unless such member has been in continuous good standing in Local 825 for not less than two (2) years immediately preceding the month of nominations – that is, for the time of June 1, 2020 through May 31, 2022.

**Regular Meeting Attendance:** All candidates must be in regular attendance at all regularly scheduled Local Union membership meetings held after the nomination and before the election subject, however, to a reasonable excuse based upon good cause, such as physical incapacity or a death in the family.

### ELIGIBILITY OF OWNER/OPERATORS AND SUPERVISORS

No member who is an owner/operator of an entity that employees operating engineers is eligible for nomination, election or to nominate another member. Further, to be eligible for and to hold elective office, a member – at the time of nomination and continuing through the term of any elective office – shall not have the power to employ or discharge or effectively recommend such action with respect to a company directly connected with the craft jurisdiction of the Local Union, nor shall such individual customarily exercise the functions exercised by supervisors within the meaning of the National Labor Relations Act, as amended, for such company. This shall not apply to a Master Mechanic, Lead Engineer or Craft Foreman.

To be nominated or eligible for nomination or election, a member must be, as of June 1, 2022, continuously employed at the trade or have been actively seeking continuous employment at the trade for two (2) years in the case of Business Manager and one (1) year in all other cases. This restriction shall not, however, apply to any member employed by or working for Local 825 or the International Union in any capacity, or any member who has been assigned by Local 825 or the International Union to perform work in furtherance of the interests of organized labor, where, in either case, the employment or assignment is sufficiently time-consuming so as to preclude the member from meeting the requirement for continuous employment or actively seeking continuous employment at the trade. No member retired from work at the trade shall be eligible for nomination or election. This restriction, however, shall not be applicable to any member so retired who, at least for one (1) year, and in the case of one seeking the office of Business Manager, at least for two (2) years, immediately prior to the month of nominations, has ceased to accept retirement benefits and returned, or actively and continuously sought to return, to full time work at the trade.

### BACKGROUND CHECK

A background check will be conducted for each nominee and, consistent with Section 504 of the LMRDA, 29 U.S.C. § 504, the results of said background check will be a factor in determining eligibility.

### NOMINATING PETITIONS

Each nomination must be accompanied by an official Local 825 nominating petition in support of the nominee signed by the lesser of either (a) two hundred (200) other members in good standing or (b) members in good standing equaling two percent (2%) of the entire membership of the Local or, in the case of a District Executive Board Member, of the District. Petitions will be made available by GES under the auspice of the Election Committee at Local 825's headquarters located at 65 Springfield Avenue, 3rd Floor, Springfield, New Jersey 07081 (the "Springfield Headquarters") beginning on Monday, May 2, 2022. A candidate and/or his or her representative must present identification and sign for the petition package received.

Only Local 825 members in good standing may sign nominating petitions. Therefore, to receive or sign a petition, a member must have paid all monies that come due on April 1, 2022, by no later than April 30, 2022, the end of a thirty (30) day grace period.



Petitions must be returned on or before Monday, June 6, 2022. Completed petitions can be (1) mailed by registered or certified mail, return receipt requested, addressed to the Recording-Corresponding Secretary at the Springfield Headquarters, as long as they are received no later than June 6, 2022 at 4:00 p.m., (2) filed in person at the Springfield Headquarters no later than June 6, 2022 at 4:00 p.m., or (3) filed in person with GES, acting on behalf of the Recording-Corresponding Secretary, at the June 6th Semi-Annual Membership Meeting before the meeting is called to order. ONLY OFFICIAL NUMBERED NOMINATION FORMS MAY BE USED. ALL RETURNED PETITIONS MUST HAVE ORIGINAL SIGNATURES. PHOTOCOPIES OF PETITIONS WILL NOT BE ACCEPTED. A PETITION RECEIVED OR FILED LATER THAN AS AFOREMENTIONED SHALL BE NULL AND VOID.

It is suggested that potential candidates submit more signatures than the minimum required since ineligible members and/or unreadable signatures may be challenged and not count towards the requisite number.

## **PROCEDURE FOR NOMINATIONS MEETINGS**

NOMINATORS AND SECONDERs MUST BE MEMBERS IN GOOD STANDING (HAVING PAID ALL MONIES THAT COME DUE ON APRIL 1, 2022, BY NO LATER THAN APRIL 30, 2022, THE END OF THE THIRTY DAY GRACE PERIOD). THEY MAY NOT BE OWNER/OPERATORS OF AN ENTITY THAT EMPLOYS OPERATING ENGINEERS.

## **NOMINATIONS WILL BE CALLED IN THE FOLLOWING ORDER:**

As directed by the Election Committee, a GES representative will chair the Nominations meeting. Before being recognized, all nominators and seconders must present acceptable proof of identity, such as a driver's license or membership card. Nominators must submit a written statement (which the Local will provide to nominators and seconders at the time of nomination and seconding) with the registration number of each nominated individual. A nomination must be seconded to be valid. In the case of nominations for District Executive Board Members, the nominee must be affiliated with the District for which he or she is being nominated unless part of a full slate nominations as discussed below. No member can make more than one nomination for each time recognized unless nominating an entire slate. Names of all candidates will be recorded by the Recording-Corresponding Secretary.

Members may run as part of a full slate or as individuals. Partial slates will not be recognized. Full slate nominations will be conducted first, followed by individual nominations for Business Manager, President, Vice President, Recording-Corresponding Secretary, Financial Secretary, Treasurer, three (3) Trustees, three (3) Auditors, Conductor, Guard, and four District Executive Board Members, one from each District. To nominate a full slate, the Nominator must nominate a candidate for each of the eighteen (18) offices and positions.

All nominators shall confine their remarks, without campaigning, to nominating the candidates for their slates or nominating independent candidates. A member can only be nominated for one (1) office or position. A member who is nominated for more than one (1) office or position and accepts both nominations will be presumed to have accepted the first office or position he or she was nominated for and to have declined the nomination to the second office or position.

Nominees must indicate their acceptance on an Acceptance Form which GES, under the auspices of the Recording-Corresponding Secretary, will mail to each Nominee at the Nominee's last known home address within five (5) days after the nominations have been concluded. Acceptance forms will also be made available at the Semi-Annual Meet-

ing for Nominees who are in attendance. The Recording-Corresponding Secretary must receive the completed Acceptance Form within ten (10) days of the date that the Local Union provides written notification of the Nomination. Written acceptance can be (1) filed in person or (2) mailed by registered or certified mail, return receipt requested, addressed to Recording-Corresponding Secretary at the Springfield Headquarters. The Acceptance Form must include the candidate's name as he or she wishes it to be placed on the ballot, home address, home phone number, Registration Number and, for candidates who use email, an email address. A written acceptance of nomination received or filed with the Recording Corresponding Secretary after the aforementioned ten (10) day period shall be null and void. An eligible candidate must also complete a Slate Affiliation Form, if applicable. In addition, there will be a form for any candidate to decline the nomination.

The eligibility of each Nominee will be reviewed by the Election Committee; and each Nominee will be advised by letter of the Nominee's eligibility or lack thereof. Any candidate who has been declared ineligible may submit evidence to GES, as designee of the Election Committee, to support his/her claim of eligibility within ten (10) days of receiving notice that s/he is ineligible. The Election Committee, upon the recommendation of GES, will make decision as to eligibility within forty-eight (48) hours of reviewing the evidence. Such Nominee may also appeal such decision as described at the bottom of the Notice. Any appeal regarding eligibility shall not delay the election.

Where all candidates duly nominated to elective office or positions are unopposed for election, the Election Committee shall dispense with a secret ballot vote and, at the end of the Semi-Annual Membership Meeting, shall direct the Recording-Corresponding Secretary to cast one ballot for the unopposed nominees who shall then be declared duly elected. Where any single candidate is duly nominated to an elective office or position, and s/he is unopposed for election to that office or position, the Election Committee shall dispense with a secret ballot vote for that office or position and, at the end of the Semi-Annual Membership Meeting, shall direct the Recording-Corresponding Secretary to cast one ballot for the unopposed nominee who shall be declared duly elected in their office. In such case, the Election Committee shall direct GES to place the name of the unopposed candidate to that office on the regular ballot with "UNOPPOSED" printed on the box next to the candidate's name, signifying the election of the candidate.

## **CAMPAIGN FUNDRAISING**

No candidate or prospective candidate for Local 825 office or position, and no supporter thereof, may solicit or accept any direct or indirect financial support from any non-member of the International Union, from any other labor organization, or from any employee, corporation, other business entity or foundation.

## **DISTRIBUTION OF CAMPAIGN LITERATURE**

Local 825 will comply with any reasonable request by a candidate to distribute campaign literature. Distribution will be at the candidate's expense. Any candidate who wishes to mail campaign literature to Local 825's membership must bring such literature to the Springfield Headquarters in sealed, stamped envelopes. Local 825 will, at the candidate's expense, address each envelope containing the candidate's campaign literature. All expenses related to a mailing must be paid in advance of the mailing.

To avoid delays, all campaign literature must be delivered to the Springfield Headquarters no later than 4:30 PM, two (2) business days prior to the requested mailing date. All forms for requesting mailing

dates by members seeking nomination or election must be submitted in writing and mailed or hand delivered to the Springfield Headquarters.

## **INSPECTION OF MEMBERSHIP LIST**

Each candidate may inspect a list containing the names and last known address of all Local 825 members one time within thirty (30) days of the election. No candidate is entitled to a copy of the list.

The membership list will be made available for inspection at the Springfield Headquarters, weekdays, excluding holidays, beginning from July 1, 2022 until August 5, 2022 between the hours of 9:00 a.m. to 5:00 p.m. Any candidate who wishes to inspect the list should notify GES at least twenty-four (24) hours prior to the requested inspection date and time by calling 1-800-864-1263 or by emailing [helpdesk@vo-tesges.com](mailto:helpdesk@vo-tesges.com).

## **NOTICE OF ELECTION**

The election of officers and positions of Local 825 referenced above in this notice will take place on Saturday, August 13, 2022, from 7:00 a.m. until 7:00 p.m. at the polling sites listed below in this notice. Voting will be conducted in person by secret ballot.

Campaigning inside or within two hundred (200) feet of any of the designated polling location is strictly prohibited.

Except as noted above, all members in good standing have the right to vote. Therefore, to the eligible to vote, a member must have paid all monies that come due on July 1, 2022, by no later than July 30, 2022, the end of thirty (30) day grace period.

Members will be assigned to a voting location corresponding to the District where they affiliated, as set out above. Since each District elects its own District Executive Board Member, if a member feels that he or she is incorrectly listed in a specific District, the member must notify GES immediately to vote a regular ballot rather than a challenged ballot. Members should consult the list of polling locations shown below to determine the location of their designated polling site.

### **POLLING LOCATION #1**

All members who are in District 1 (Ocean, Burlington, Camden, Gloucester, Atlantic, Salem, Cumberland, and Cape May Counties) will vote at: International Union of Operating Engineers Local 825, AFL-CIO  
3242 Route 206, Building A, Unit 6  
Bordentown, NJ 08505

### **POLLING LOCATION #2**

All members who are in District 2 (Essex, Union, Middlesex, Somerset, Mercer and Monmouth Counties) will vote at: International Union of Operating Engineers  
Local 825, AFL-CIO  
65 Springfield Avenue, 3rd Floor  
Springfield, NJ 07081

### **POLLING LOCATION #3**

All members who are in District 3 (Sussex, Passaic, Bergen, Hudson, Warren, Morris and Hunterdon Counties) will vote at: Holiday Inn  
1000 International Drive, North  
Mount Olive, NJ 07828

### **POLLING LOCATION #4**

All members who are in District 4 (Delaware, Ulster, Sullivan, Orange and Rockland Counties) will vote at: International Union of Operating Engineers

Local 825, AFL-CIO

96 Bates / Gates Road, New Hampton, NY 10968

The ballot will be designed to enable a member to have the option of either voting for a full slate of 18 candidates or voting for individual candidates. Full slates of 18 candidates will appear on the ballot first, followed by individual candidates. In the case of individual candidates, the incumbent for the office or position will be listed first, and the other nominees for the same office or position in alphabetical order by last name. Full slates will receive a "slate box" allowing a member to place one "X" mark in favor of all 18 candidates. In compliance with federal labor law, however, the ballot will also clearly indicate that members may vote for fewer than all of a Slate's candidates.

MEMBERS MUST PROVIDE VALID IDENTIFICATION (DRIVER'S LICENSE, UNION CARD, GOVERNMENT PHOTO I.D.) IN ORDER TO VOTE. IF A MEMBER DOES NOT HAVE PROPER IDENTIFICATION OR IF THE MEMBER REGISTERS AT A LOCATION NOT ASSIGNED TO HIM OR HER AS LISTED ABOVE, THE MEMBER WILL VOTE A CHALLENGED BALLOT.

ANY MEMBER ON LINE AT 7:00 PM WILL BE PERMITTED TO VOTE, BUT A MEMBER CANNOT JOIN THE LINE AT 7:01 PM OR LATER. AFTER CASTING HIS OR HER BALLOT EACH MEMBER MUST IMMEDIATELY LEAVE THE POLLING AREA.

Each candidate is entitled to have one (1) election observer present at each polling site to observe the casting of ballots. Each candidate shall also be entitled to one (1) observer per table at which ballots are being tallied. An observer must be a member in good standing at Local 825. No candidate may serve as his/her own observer. Observers will be required to present identification and to sign in on an observer register. Written observer rules will be provided to all candidates at a meeting to be scheduled and chaired by GES prior to the election. Candidates unable to be present at such meeting may phone GES at 1-800-864-1263 or 516-356-2556. Candidates must submit the names of their observers in writing to GES, c/o Local 825 Springfield Avenue, 3rd Floor, Springfield, New Jersey 07081 by Monday, August 1, 2022 at 4:00 p.m.

The tally of ballots for each of the four (4) locations will be conducted at the Springfield Headquarters. At the close of balloting, the ballot boxes will be sealed by GES, and the seal will be signed by the candidate's designated observers. Under the direction and accompanied by a member of the Election Committee, ballots from the four (4) polling locations will be driven to the Springfield Headquarters by GES representatives. No observer may ride in a vehicle that is transporting ballots. Ballot boxes will be unsealed, and tallying will begin only after all observers have arrived at the tallying place.

Officers shall be elected by a plurality of the vote cast, except that the three (3) candidates receiving the highest number of votes for the offices of Trustee and the positions of Auditor shall be elected. In the event of a tie, a runoff election shall be conducted in the same manner as the regular election when the Election Committee deems appropriate, with notice of election being sent no less than fifteen (15) days preceding such election. Only candidates in an actual, numerical tie will participate in runoff elections.

## **PROTESTS AND APPEALS**

Any protest relating to the conduct of the nominations and/or the election must be made in writing to the Election Committee at the Springfield Headquarters within thirty (30) days after the election. Such protest must set forth the specific reasons for its filing. Any member in good standing may file such a protest. Decisions of the Local Union may be appealed to the International General Executive Board and to the General Convention in accordance with the International Constitution.



# Holiday party returns with spirits high

**L**ocal 825 members celebrated the holiday in person for the first time in two years at the East Brunswick Hilton in December.

Members and friends were greeted as they entered by Business Manager Greg Lavee and President John Wood. Inside they found the food and drink plentiful and served by the Hilton's friendly staff.

Spirits were high as everyone got together to mingle and catch up with one another. If the evening was quieter than past celebrations, it was all the more close-knit and appreciated for being so.

The Marines who conduct the Toys for Tots program were unable to attend our event for the first time, due to unprecedented demands on their resources. As a result, our fundrais-

ing drive was held online for Toys for Tots and also for the Community Food Bank of NJ.

The Toys for Tots effort brought in contributions of just over \$10,000, enough to purchase 15,000 toys. The Community Food Bank of New Jersey collected more than \$7,000, enough to provide 21,069 meals ... all thanks to the generosity of our members.





## International Union of Operating Engineers Local 825

65 Springfield Avenue, 3rd Floor  
Springfield, NJ 07081  
(973) 671-6900  
(973) 921-2918 FAX

**[www.IUOE825.org](http://www.IUOE825.org)**

Non-Profit Org.  
U.S. Postage  
**PAID**  
???, NJ  
Permit No. ???



## BETTER BUILDING BEGINS HERE

### BRING IT ON!

#### Ad program signals readiness

In the face of a new era of infrastructure programs and an evolving technology, our 2022 advertising program tells the world we're ready in three words:

Bring It On!

The message targets employers and also speak to public officials, other operators and the public at large. "More Experienced, Better Trained" is backed by Local 825's proactive approach to training, education and experience.

The tone of the advertising is confident and is meant to project members' readiness to meet unprecedented demands with pride and skill.

"Ready Today, Ready Tomorrow" promises

that our members will be on the job when they are needed and that they will continue to grow as technology and equipment evolve.

The ads will appear in business and trade publications, on billboards and in digital on-line advertising throughout the year.

### BRING IT ON A New Era Of Infrastructure Dawns



*Billboards in select locations complement the ads*



**BETTER BUILDING BEGINS HERE**  
[www.IUOE825.org](http://www.IUOE825.org)

**Greg Lavee**  
IUOE General Vice President  
Business Manager, Local 825

### BRING IT ON A New Era of Infrastructure Dawns



**Local 825 Heavy  
Equipment Operators**  
**More Experienced,  
Better Trained**

**BETTER BUILDING BEGINS HERE**  
[www.IUOE825.org](http://www.IUOE825.org)  
**GREG LAVEE**  
IUOE General Vice President  
Business Manager, Local 825

**Ready Today — Ready Tomorrow**

*Full page ads will run in business and trade publications*