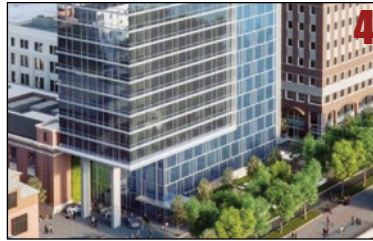


825. NEWS



View From The Top.....	p 2
Jobs Council.....	p 3
Mega-Projects.....	p 4
Health Fairs.....	p 6
Terminal One.....	p 7

SERVING THE LOCAL 825 MEMBERS OF THE INTERNATIONAL UNION OF OPERATING ENGINEERS

VOL. 8 ISSUE 3

Construction sectors, economy heat up Gateway Tunnel. Airport. Bridges. The Hub. Hilton. BOOM!



Any one of these mega-projects would have been exciting just a few years ago. Now they are happening at once. Instead of single projects, entire sectors are on fire. In addition to Transportation infrastructure, roads and bridges, there is the transportation, logistics and distribution sector, with a chain of new warehouses being added to those already in operation. The Hub and

Hoboken Hilton will create jobs in building. Newark Airport will replace Terminal A with Terminal One. And now, there is light at the end of the Gateway Tunnel. Photos above are Amtrak/Gateway Tunnel (top left); Newark Airport (top right); Bayonne Bridge and ports (bottom left); Amazon warehouse site prep in Cranbury (bottom right). More information on pages 3, 4 and 7.

CALENDAR

Note, all district meetings begin at 7 p.m. unless noted otherwise.

MAY

12 – Sixth Annual Golf Outing

Gambler Ridge, 121 Burlington Path Road, Cream Ridge, NJ

13 – Mother's Day

14 – District 1 meeting

Kerri Brooke Caterers
755 S. White Horse Pike, Hammonton

16 – District 2 meeting

Sheraton Edison
125 Raritan Center Parkway, Edison

16 – District 3 Health Fair

3 p.m. to 7 p.m., Union Hall
65 Springfield Ave., 3rd floor, Springfield

19 – Armed Forces Day

21 – District 3 meeting

Holiday Inn
1000 International Drive, Mt. Olive

23 – District 4 meeting

NY Training Center, 96 Bates Gates Road, New Hampton, NY

28 – Memorial Day

UNION HOLIDAY

JUNE

4 – District 1 meeting

Kerri Brooke Caterers
755 S. White Horse Pike, Hammonton

6 – District 2 meeting

FairBridge Hotel
195 Davidson Ave., Somerset

6 – Health Fair

3 p.m. to 7 p.m.
NJ Training Center, Dayton

10 – Annual Clay Shoot

Lehigh Valley Sporting Clays
2750 Limestone St., Coplay, PA

11 – District 3 meeting

Russian Hall
464 Outwater Lane, Garfield

(Calendar continued on page 4)

VIEW FROM THE TOP

Greg Lalevee, Business Manager



Persistence, projects, principles

NJ and NY efforts provide big benefits

Strategy and persistence pay off. We learned that with the TTF solution in 2016 and we learned it again most recently with the Gateway Tunnel funding.

Gateway Tunnel became a political football but eventually was included in the 2018 Congressional budget and President Trump signed off on it.

The importance of the tunnel is on par with the TTF's importance to our members. It means thousands of good-paying jobs over many years to come and its benefits will accrue to the entire Northeast.

We keep in mind these lessons as we extend our presence for principles and projects in both New Jersey and New York.

New York State Of Mind

Our footprint was reinforced in New York State with the opening of our state-of-the-art training center late last year. The center stands as testimony to our commitment to the Empire State and to our 1,000 members who live and vote there.

We've taken active roles in lobbying hard in the past for projects like the Mount Resorts Casino in Sullivan County, the CPV Valley Energy Center in Orange County, the proposed Lego-land in Goshen and the Route 17 expansion.

ELEC's Daniel Ortega and Mike Makarski arranged the meetings in Albany in March. We were joined by our business agents in

very productive discussions over two days in meetings with our state delegation, Senate and Assembly members and other key leaders. There are important things moving through the Legislature.

There is a bill called "the definition of public works" bill, which would define what jobs are covered by prevailing wage. We have a good definition in New Jersey but in New York the definition is more vague, so we're hoping to clarify that.

Route 17 Success

One of our priorities during the trip was to keep \$5 million in the state's budget to perform environmental and design studies to add a lane to Route 17 from Harriman to Sullivan County.

We were understandably pleased when we learned two weeks later that the funding was included in the state's budget and that the studies may soon begin.

New Jersey's economy is experiencing continued growth in a variety of sectors, from transportation, logistics and distribution to bridges, "The Hub" in New Brunswick, a Hilton in Hoboken and many other construction projects across the entire state. (See stories on page 3, 4 and 7).

It's been a long winter and spring is finally here. With it, we're looking forward to two of our popular Scholarship fundraisers: The Sixth Annual Golf Outing on May 12 and the Sporting Clays shootout on June 10. As we get read to award our 2018 scholarships in June, we hope you will support one or both of these worthwhile events.

Contact Information

Local 825 Headquarters

65 Springfield Avenue, 3rd FL
Springfield, NJ 07081
(973) 671 - 6900
(973) 921 - 2918 FAX

District Offices:

5 Allison Drive
Cherry Hill, NJ 08003
(856) 470-1480
(856) 470-1485 FAX

96 Bates Gates Road
New Hampton, NY 10958
845-674-9020 - Phone
845-674-9025 - Fax

Health & Welfare office

65 Springfield Avenue, 2nd FL
Springfield, NJ 07081
(973) 671 - 6800
(973) 921 - 0706 FAX

96 Bates Gates Roads
Suite 70
New Hampton, NY 10973
(845) 374-2559
(845) 374-2564 FAX

NJ Training Center

338 Deans Rhode Hall Rd.
Dayton, NJ 08810
(732) 798-2170
(732) 798-2175 FAX

NY Training Center

Wawayanda location
96 Bates Gates Road
New Hampton, NY 10958
845-673-3154 - Phone
845-674-9025 - Fax

ELEC Office

65 Springfield Avenue, 2nd FL
Springfield, NJ 07081
(973) 630-1010
(973) 630-1013 FAX

Union Plus®

(Offered through Wells
Fargo Home Mortgage)
Debra Botulinski
(908) 608-2013

Training Center site for NJ jobs council signing



Architectural rendering of one of the buildings proposed for The Hub technology center.

Gov. Phil Murphy picked the Local 825 Training Center to announce his Jobs and Economic Opportunity Council.

Under his executive order, the Council will provide economic advice and recommendations for stimulating job growth and workforce development in New Jersey.

Spotlight on Local 825

“The meeting was a great opportunity to showcase Local 825 and its state-of-the-art training facility to some of the most influential policymakers in New Jersey,” said Business Manager Greg Laevee.



Business Manager Greg Laevee comments to NJ 12-TV regarding Gov. Murphy's initiatives to boost economic opportunities in the state.



Gov. Murphy convenes meeting to announce plans for The Hub, a new innovation and research center in New Brunswick.

Council members include Lt. Gov. Sheila Oliver, State Treasurer, Commissioner of Education, Commissioner of Labor, Secretary of Higher Education, CEO of the New Jersey Economic Development Authority, Commissioner of Banking and Insurance, and the Director of the John J. Heldrich Center for Workforce Development at Rutgers University. The Governor's Chief of Staff, Chief Counsel, Chief Policy Advisor, and Deputy Chief of Staff for Economic Growth will also be on the Council.

The executive order mandates that the

Council formulate recommendations on economic trends, possible government action to expand employment, sources for infrastructure funding, priorities for federal and state-funded programs, and the development of software technology to improve services for job seekers.

“We must make sure that state residents have access to jobs and opportunities that will allow them to contribute to our economy,” Gov. Murphy said.

The Hub – More Opportunity

Weeks after the Training Center meeting, Gov. Murphy unveiled plans in New Brunswick to construct a new, state-of-the-art “incubator hub” across from the train station.

The proposed office, research, residential and retail campus is slated for completion in spring 2019 and will serve as a research and innovation facility.

The site will consist of approximately four-million square feet and will integrate new office and research and development space, modern apartments, high-end retail and attractive public spaces.

The city is home to Rutgers University, Rutgers Robert Wood Johnson Medical School, RWJ Barnabas Health's Robert Wood Johnson University Hospital and the global headquarters of Johnson & Johnson.

Pallone for Long Branch Mayor

Local 825 has thrown its support of Council President John Pallone for Mayor of Long Branch.

Greg Laevee, Business Manager of IUOE Local 825 released the following statement:

“Long Branch is an exemplary city but over the years this great community has remained stagnant while other shore towns experienced growth and economic revitalization.

“Council President Pallone has proven to be a true leader and we believe he can bring people together and achieve the revitalization Long Branch needs to survive and prosper.”

Entire sectors ignite economy and employment

The economy of New Jersey and New York is seeing an explosion of projects that span multiple sectors, from bridges and ports, transportation, logistics and distribution centers, and major building complexes.

The Bayonne Bridge is fulfilling its promise of revitalizing our ports as super-cargo ships are now able to glide beneath the roadbed that was raised from 151 feet to 215 feet.

Since its completion, the Port Authority immediately began to log cargo increases. In June 2017, it saw a more than 10 percent increase from the prior year. Port data show a general increase in the follow-

ing months, topping off at a 15 percent increase in September 2017.

Work continues on the Pulaski Skyway and the \$480 million Wittpenn Bridge, connecting Kearny with Jersey City. Completion is expected in 2021.

The 'TLD' Sector

The Transportation, Logistics and Distribution sector has been on fire, with mega-warehouses being constructed along the New Jersey Turnpike.

The Turnpike is ideal for logistics because it provides quick access to the state's nine million residents. And 40 percent of the na-

tion's population lives within 24 hours.

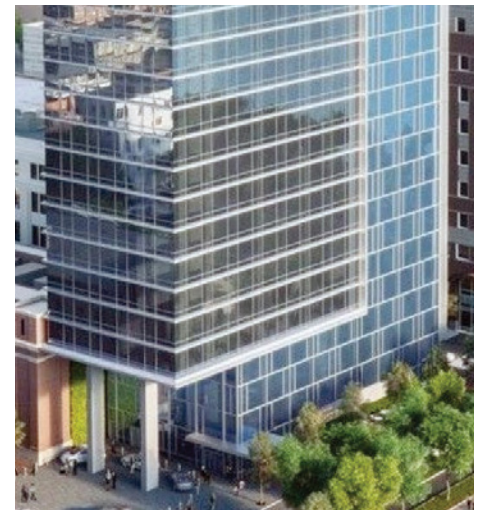
Hoboken Hilton

In addition to New Brunswick's "Hub" detailed on page 3, a new Hilton Hotel will be constructed 30 miles to the east in Hoboken.

The 17-story, 270-room hotel will rise from the parking lot behind the post office, facing the Hudson River. The project was made possible by an agreement between Mayor Ravi Bhalla, city officials, developers and community groups. According to developers, the hotel will create \$1.7 million in tax revenue for the city and about 120 full-time jobs once it's opened.



The Petillo construction project in West Deptford is the latest pearl in the necklace of 10 Amazon warehouse/fulfillment centers that adorn the New Jersey Turnpike.



A new Hilton will be constructed in Hoboken. Kate Gibbs and ELEC staff worked tirelessly for this approval.



The Pulaski Skyway and the \$480 million Wittpenn Bridge.

(Calendar continued from page 2)

13 – District 4 meeting

NY Training Center
96 Bates Gates Road, New Hampton

14 – Flag Day

17 – Father's Day

19 – District 4 Retiree Brunch

10 a.m. to 1 p.m., NY Training Center
96 Bates Gates Road, New Hampton

21 – Summer begins

27 – District 2 & 3 Retiree Brunch

10 a.m., \$20, Ramada Plaza
160 Frontage Road, Newark

Full STEAM ahead for Local 825 projects

Journeyman, apprentices and STEAM candidates team up

It's easier to drive in the Dayton Center parking lot this month, thanks to the work performed by our winter training class participants and STEAM candidates.

In advance of mud season and summer operations, the milling and paving team put down 110 tons of asphalt, paving the drive-

way from the shop to the front parking lot, then expanding the parking lot to eliminate the mud when it rains and the dust when it's dry and windy.

The work was completed in two days and was done by 31 workers and nine instructors.

"Aside from getting a nice roadway and parking area, we've trained our STEAM candidates on milling and paving and added to their experience," said Willie Vaccaro, training co-director. "When they go out on a job, they'll know exactly what to do and how to do it."



STEAM program participants (from left to right), Scott Tiver, Peter Frontaura, Matthew Coffee, Dominic Christiana, Devon Magnusson, John Ferieira, Kevin Costa and Kenneth Southway.



TRAINING CENTER CALENDAR

NEW JERSEY TRAINING CENTER

All classes start at 7 a.m. unless otherwise noted. (732) 798-2170

MAY

Saturday, May 5
Signal Person Class

Saturday, May 12
Rigger Class

Saturday, May 19
8-Hour Hazmat Refresher

JUNE

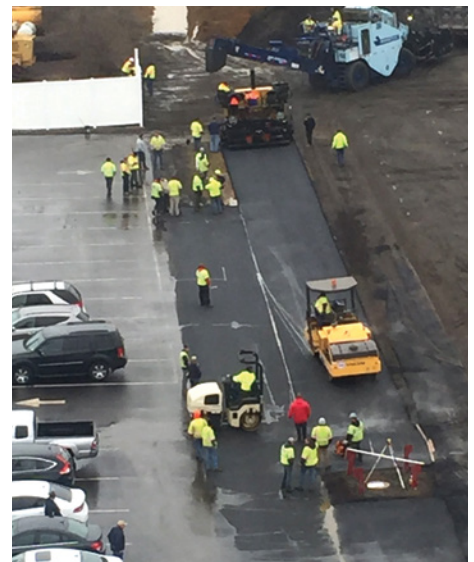
Saturday June 2
Asbestos Awareness Class

NOTE, there is no Hazmat Refresher scheduled for June

NEW YORK TRAINING CENTER

(845) 673-3154

At press time, no classes were scheduled for May and June.



Welfare Fund Benefits move to Horizon BCBSNJ

The Local 825 Welfare Fund Benefit Program has moved from MagnaCare to Horizon Blue Cross Blue Shield of New Jersey.

The change expands access to Horizon BCBSNJ's medical provider networks and provides enhanced claims administration services.

Although the MagnaCare and Local 825 participating medical provider networks are no longer available, our members will have a broader choice of qualified hospitals, physicians and other health care providers to meet their various health care needs through Horizon BCBSNJ's extensive PPO network.

To check if your provider is in the HORIZON PPO network, visit doctorfinder.horizonblue.com

You should also note that:

- The medical network and medical claims administration will be provided by Horizon BCBSNJ.
- The hospital network and hospital claims administration will continue to be provided by Horizon BCBSNJ.
- Mental health, substance abuse, and EAP networks and claims administration

will continue to be provided by Horizon BCBSNJ.

- Dental benefits will continue to be provided by Fidelio Dental Insurance.
- General vision benefits will now be with Horizon BCBSNJ, administered through Davis Vision.
- Prescription drug benefits will continue to be provided by Caremark.

If you are currently eligible for benefits and did not receive your new identification cards during April, please call the Fund Office 973-671-6800.

Health Fairs aim to keep you healthy

The Operating Engineers Local 825 Welfare Fund is sponsoring two upcoming Health Fairs for members, their spouses and eligible dependents over the age of 18. Because we want you to stay healthy, we encourage you to attend. If you or your dependents plan to have a blood test on one of these dates, please call the Funds Office at 973-671-6800 for a registration form, if you have not already received one in the mail. **(Registration is not mandatory.)**

Appointments are not necessary. Testing hours are between 3 p.m. and 7 p.m. Fasting for six hours prior to blood tests will give the best results.

The Health Fairs will take place:

DISTRICT 3

Wednesday, May 16
3 p.m. to 7 p.m.
Local 825 Union Hall
65 Springfield Ave, 3rd Floor
Springfield, NJ

DISTRICT 2

Wednesday, June 6
3 p.m. to 7 p.m.
Local 825 Training Center
338 Deans Rhode Hall Rd.
South Brunswick, NJ



Essex Dems honor LoCrasto

Third-generation operating engineer, decorated Vietnam veteran and business representative John LoCrasto was honored by the Essex County Democratic Committee at its Annual Labor Breakfast in February.

Local 825 is proud of John and thanks him for his service.

The Essex County Democratic Committee (ECDC) works toward encouraging citizens to vote on election day.

ECDC is a county party under the umbrella of the New Jersey Democratic State Committee, which itself is a chapter of the Democratic National Committee.



LeRoy Jones, Chairman of the ECDC, congratulates John for his service award.

\$1.4 billion 'Terminal One' set to begin at Newark Airport

Newark Airport will replace its beleaguered Terminal A with a \$1.4 billion, one-million square foot facility by 2022.

Construction was ready to begin in April.

"I applaud the Port Authority for their vision and leadership in making this comprehensive overhaul of Newark Airport's outdated facilities a reality," said Mark Longo, Director of ELEC, who advocated for this project.

"This investment will generate billions in economic benefit for the region, while dramatically improving the travel experience for New Jerseyans."

The project will also include a weather-protected, climate-controlled, above-grade pedestrian bridge, moving walkways and a link to AirTrain.

The new facility will alleviate the curbside congestion that passengers now experience. It will reduce long lines at the lobby check-in and security checkpoints, expand passenger hold-room areas, and add amenities and concessions, bathrooms, elevators and baggage claim areas.

The Port Authority estimates that as many as 5.6 million additional passengers will use Terminal One over the next 20 years.



Architectural rendering from Grimshaw Architects shows the T-shaped terminal with a central head house and single concourse serving 33 gates.

Finding common ground on transportation needs

ELEC hosted a bi-partisan group of legislative leaders, associations and business organizations to discuss the future of New Jersey transportation infrastructure.

The meeting provided a valuable discus-

sion on a host of transportation issues, including the Gateway Tunnel, a proposed list of recommendations to NJ Transit and what might be expected to come out on the federal level.



(From left to right,) Sen. Vin Gopal, Assemblywoman BettyLou DeCroce, Mark Longo, Sen. Bob Gordon, Greg Lavee, Assemblyman Dan Benson and Sen. Steven Oroho.

NY advances Rt. 17 expansion

Key environmental and design activities related to the expansion of Route 17 in Orange and Sullivan counties received a \$5 million boost with the passage of the 2018-19 New York State Budget.

The project has received support of Local 825 and ELEC and is considered one of the most critical infrastructure projects in the Hudson Valley.

"With the opening of Resorts World in Sullivan County, a Legoland proposed for Goshen, and assorted development that is sure to follow, it is critical that Route 17 be prepared to handle additional traffic," said Daniel Ortega, who had helped lobby for the project.

Assembly members Aileen Gunther and James Skoufis helped secure the \$5 million in the state's budget.

"Anyone who has traveled Route 17 on a summer weekend knows how critical it is to widen the thoroughfare," Skoufis said.



International Union of Operating Engineers Local 825

65 Springfield Avenue, 3rd Floor
Springfield, NJ 07081
(973) 671-6900
(973) 921-2918 FAX
www.IUOE825.org

Non-Profit Org.
U.S. Postage
PAID
???, NJ
Permit No. ???



BETTER BUILDING BEGINS HERE

Congressman tours training center

Business Manager Greg Lavee and ELEC's Daniel Ortega and Mike Makarski hosted Congressman Josh Gottheimer (NJ 5th Congressional District) at the Local 825 Training Center in April.

They discussed a range of topics, including training, the Gateway Tunnel and economic development.

Interviewed on NJ-TV, Gottheimer said he is optimistic of that the Gateway Tunnel project will be funded. "... there's a lot of momentum to get this project going and we cannot afford to delay any more."

Greg added, "There are thousands of jobs at stake with this project."



Congressman Josh Gottheimer calls for Gateway Tunnel funding during interview with NJTV at the Local 825 Training Center.

Local 825 gains influence

2018 has brought additional recognition for Local 825. A prominent public profile helps ensure our voice is heard during public debates on critical issues.

The March issue of ROI-NJ business magazine included Business Manager Greg Lavee in its "ROI Influencers" list of influential leaders in the Garden State. Greg is listed in the Unions sector, along with John Ballantyne, Carpenters Union; Kevin Brown, Service Employees International Union; Kevin McCabe, Carpenters Contractor Trust; Bill Mullen, Building and Construction Trades Council; and Ray Pocino, Laborers Union.