



825.News

SERVING THE LOCAL 825 MEMBERS OF THE INTERNATIONAL UNION OF OPERATING ENGINEERS

VOL. 3 ISSUE 5

17.5 Mile Pipeline Crosses State

LOCAL 825 CONNECTS HEWITT PIPELINE ACROSS NORTHERN COUNTIES



Sidebooms transport a section of pipe down a hill, preparing to lower it into place in High Point State Park in Wantagh northern New Jersey. The 17.5 mile Hewitt pipeline stretches from Bradford County, Pa.,

into and across Northern New Jersey, to bring natural gas and jobs to New Jersey residents and members of Local 825. For more information, see our lead story on Page 3.



View From The Top.... | p 2

Events Calendar..... | p 2

Training Schedule..... | p 4

We build bridges | p 4



Calendar

September 9.13

- 2 Labor Day** Union Holiday
- 9 District 1 Meeting**
Kerri Brooke Caterers
755 S. White Horse Pike
Hammonton, NJ
- 11 District 2 Meeting**
Ramada Plaza
160 Frontage Road, Newark, NJ
- 12 Installation of Officers**
Hilton East Brunswick
3 Tower Center Blvd., East Brunswick, NJ
- 13 Yom Kippur**
- 16 District 3 Meeting & Blood Bank (4-7:30 p.m.)**
Russian Hall
464 Outwater Lane, Garfield, NJ
- 18 Health Fair (3-7 p.m.)**
Holiday Inn
68 Crystal Run Road, Middletown, NY
- 19 District 4 Meeting**
Holiday Inn
68 Crystal Run Road, Middletown, NY
- 25 PAC Meeting (6-9 p.m.)**
Sheraton Edison
125 Raritan Center Parkway, Edison, NJ

October 10.13

- 7 District 1 Meeting Blood Bank (4-7 p.m.)**
Runnemedede Inn & Suites
109 Ninth Ave., Runnemedede, NJ
- 9 District 2 Meeting Blood Bank (4-7 p.m.)**
Holiday Inn
2870 Route 35, Hazlet, NJ
- 14 District 3 Meeting**
Holiday Inn
1000 International Drive, Mt. Olive, NJ
- 16 District 4 Meeting Special Election for NJ Senate**
Holiday Inn
68 Crystal Run Road, Middletown, NY
- 18 Health Fair (3-7 p.m.)**
Runnemedede Inn & Suites
109 Ninth Ave., Runnemedede, NJ

VIEW From The Top

Greg Lalevee | Business Manager

Labor Day Frames Important Issues

On Sept. 12, just 10 days after Labor Day, we will be honored to have our General President James T. Callahan join with us at the East Brunswick Hilton to officiate over the installation of our officers that you elected in June.

In the spirit of our commitment to working men and women, the officers

you've chosen have dedicated their lives to uphold our traditions, our rights and our benefits that we've worked for.

Those rights and benefits have been won over generations and we need people who understand their value to the middle class and who will be willing to fight for them again, if need be.

Vote in October and November

There are always threats on the horizon, from periodic attempts to introduce "right-to-work" legislation and to eliminate the Prevailing Wage and more. We must remain vigilant against these threats as they occur and stand firm for our rights.

One potential threat comes up in the special election to fill the seat vacated by the passing of Sen. Frank Lautenberg. Based on the primary results on August 13, the election on October 16 will be between Mayor Cory Booker and Steve Lonegan. While Mayor Booker is supportive of Davis-Bacon and PLAs, Lonegan has gone on record against them.

Lonegan's camp may be hoping for light voter turnout because of the special election. Let's surprise him by getting everyone to the polls to support our candidate, Mayor Booker.

The Affordable Care Act

The latest threat to emerge is the Patient Protection and Affordable Care Act (ACA) that was signed into law in 2010. Referred to as "ObamaCare" during the election, this massive health care reform legislation poses risks to our Welfare Fund in the form of additional taxes, professional and administrative fees and the potential of undermining unions' Welfare Funds.

The new law establishes "exchanges,"



which were meant to provide coverage to those who did not have insurance, or who may have had insurance that was not considered "affordable."

This will not directly affect us because employers will continue contributing to our Welfare Fund, according to our agreements with them. In addition, the Local 825 Health benefits package

contains comprehensive benefits that are unsurpassed by what will be offered through the exchanges.

However, the ACA still will cost us all more by adding in a series of new taxes that will eventually be passed on to members. It also may make unions seem less valuable to potential members by allowing them to have the kind of benefits unions have always fought to achieve for their members.

We are analyzing these changes and will be meeting with business partners and employers to determine how they plan to respond to the new law. There may be aspects of the new Exchanges that seem appealing to contractors but the Welfare Fund is definitely the best place to be for the continued health of the Fund and our members.

We will have more to say about the new law in the near future, as the new Health Insurance Exchanges are unveiled across the country.

In the meanwhile, we wish you a Happy Labor Day and remember all the Operating Engineers who have gone before us to make our union strong and to make our lives better.

Reminder: Give the gift of life

Blood Banks:

- Sept. 16: 4-7:30 p.m. Russian Hall
464 Outwater Lane, Garfield, NJ.
- Oct. 7: 4-7 p.m. Runnemedede Inn & Suites
109 Ninth Ave., Runnemedede, NJ
- Oct. 9: 4-7 p.m. Holiday Inn
2870 Route 35, Hazlet, NJ

Northeast Upgrade Project Pipeline Nears Completion



Tyson Hill, Local 825 apprentice, runs a sandblaster on the coating crew.



Preparing the way for Portadam installation to bring in sections of pipe across wetlands.



Dan Richardson, Local 825 apprentice, serves as an oiler on a tie-in crew that joins sections of pipe together.

Tennessee Gas Pipelines' 17.5 mile-long pipeline upgrade is nearing its completion date this winter. The goal is to have gas in the pipe by the end of November.

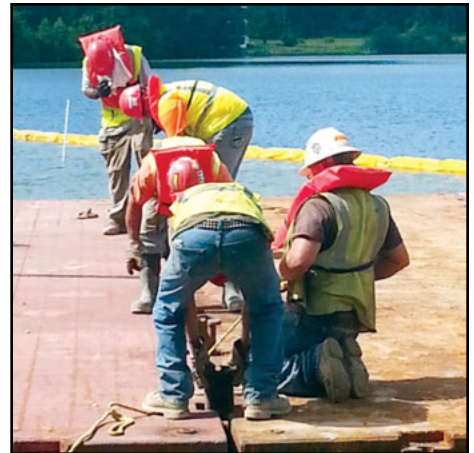
At an estimated cost of \$450 million, the project has produced nearly 1,800 jobs at its height in 2013.

This expansion project was developed to meet increased demand in the Northeast for transportation capacity for natural gas. FERC approved the project for construction on May 29, 2012.

The upgrade converts the existing 24-inch diameter 300 Line by constructing five, 30-inch diameter pipeline loops and modifying four existing compression stations.

A pipeline loop is a segment of pipeline installed adjacent to an existing pipeline and connected to the existing pipeline at both ends. These five loops will close out the remaining unlooped segments of Tennessee's existing 300 Line east of Bradford County, Pennsylvania, into New Jersey.

The project extends from Bradford County to New Jersey, through areas within Sussex, Passaic and Bergen counties.



Operating Engineers working in a bull gang, assemble a barge, which is used to support the crane as it digs an open ditch across Lake McCormack.



Work progresses with care being taken at every turn to protect the environment.



Crews construct a Portadam to separate the lake and create a dry path through wetlands of McCormack Lake, preparing the bed to lay pipe. The Portadam above-ground water storage system allows work to progress while complying with stringent state and federal environmental regulations.

Information and photos provided by Lead Engineer Adam Shover

Bridge construction blossoms in the Garden State

In addition to work already announced for the Bayonne Bridge, Goethals, Outerbridge crossing, our members are also working on two other iconic spans.

The Vertical-Lift Wittpenn Bridge

The Route 7 Wittpenn Bridge over the Hackensack River connects Jersey City with Kearny. It is a vertical lift bridge, built in 1930, with no physical separation between opposing traffic on the bridge.

The total cost to replace the bridge and its access ramps is currently estimated at \$480 million, funded by federal dollars and the Lincoln Tunnel Access Program.



The new vertical lift structure will provide a minimum vertical clearance of 70-feet as compared to 35-feet for the existing bridge. Located just north of the existing bridge, it will carry two 12-foot through lanes, a 12-foot auxiliary lane and an eight-to-10-foot right shoulder in each direction. A median barrier will separate opposing traffic flows and a six-foot sidewalk along the eastbound roadway will be provided for pedestrians and bicyclists.

The project will be constructed in four separate contracts. Contract 1 is under

construction and is scheduled for completion this fall. Contract 2 is under construction and is scheduled for completion in fall 2014. Contract 3 is going out to bid in August and Contract 4 will go out next year.

The project will continue through Summer 2020. The existing bridge will be maintained until the new structure is in place. It will be demolished once the new bridge is open to traffic.

The Rt. 72 Manahawkin Bay Bridge

Preliminary construction has begun on the Rt. 72 (Manahawkin Bay) Henderson Memorial Bridge, which links Stafford Township with Ship Bottom and will provide good jobs for our members.

The three-mile long causeway is structurally deficient and functionally obsolete after 53 years in existence.

The first of four contracts that comprise the \$350 million project will construct a \$90 million bridge parallel to the existing one over Manahawkin Bay, providing the safety of a redundant route on and off the island in the event that one of the bridges needs to be closed.

The new bridge will be 2,400 feet long with a vertical clearance of 55 feet over Manahawkin Bay. Ultimately, it will function as the bridge for eastbound traffic once the project is completed. When construction of the new span is completed in 2016, the existing bay bridge will be closed for rehabilitation, then reopened to serve westbound traffic.



Schiavone Construction Co. began preparing for heavy construction activity in June by installing signs and paving in the vicinity of U-turn ramps on Cedar Bonnet Island in the center portion of the causeway. That set the stage for creating a construction zone on Cedar Bonnet Island to the east of the Bay Bridge.

Training Classes

All Classes begin at 8 a.m., unless otherwise noted. Call in advance to verify class dates and availability.

September

New Jersey Classes

Sat. 9/7: *8-hr. Hazmat Refresher*
Sat. 9/21: *Rigger Class*
Sat. 9/28: *Signal Class*

New York Classes

Sat. 9/14: *Rigger Class*
Thurs. 9/19: *8-hr. Hazmat Refresher*
Sat. 9/21: *Signal Class*

October

New Jersey Classes

Tues. 10/1- Fri.10/4: *OSHA 30 class*
Sat. 10/5: *8-hr. Hazmat Refresher*

New York Classes

No classes scheduled in October

Contact Information

Local 825 Headquarters

Hours: 8 a.m. to 5 p.m.

65 Springfield Ave., 3rd FL
Springfield, NJ 07081
(973) 671-6900
(973) 921-2918 FAX

NY District Office

6 Wesley Court
Middletown, NY 10941
(845) 674-9020
(845) 674-9025 FAX

Health & Welfare Office

Hours: 8:30 a.m. to 4 p.m.

65 Springfield Ave., 2nd FL
Springfield, NJ 07081
(973) 671-6800
(973) 921-0706 FAX

NY Training Center

6 Wesley Court
Middletown, NY 10941
(845) 692-3393

NJ District Office

5 Allison Drive
Cherry Hill, NJ 08003
(856) 470-1480
(856) 470-1485 FAX

NJ Training Center

338 Deans Rhode Hall Rd.
Dayton, NJ 08810
(732) 798-2170
(732) 798-2175 FAX

ELEC & LEGISLATIVE

Push to Lower Withholdings

We are supporting a bill that would amend the State College Contracts Law regarding the issue of "retainage."



Retainage is the amount of money withheld from a contractor until a project has been completed. Most of the contracting statutes in New Jersey operate under a 2% retainage provision. However, in the past few years, many state college contracts have been increasing their provisions to as high as 15%.

For example, on a \$50 million project with a 10% retainage requirement, \$5 million would be withheld, negatively affecting contractors who normally operate on smaller margins. It would require a slowdown of payment to later-staged phases of subcontracting work and could jeopardize payment of our members' health and fringe benefits.

Legislation (A-1217 and S-2737) seeks to prevent high and arbitrary retainage amounts and asks that public contracting statutes be standardized at the 2% level.

The bill was unanimously voted out of both houses of the Legislature on June 24.

Bill seeks protections on public works contracts

Legislation (A-2384 and S-2390) would prohibit contractors or subcontractors convicted in the previous three years of three or more violations of state wage, benefit and tax laws on two public contracts from registering as a public works contractor. The sponsors, Assemblyman Troy Singleton and Sen. Don Norcross, noted that workers and taxpayers need to be protected against unscrupulous contractors and those particular contractors should not be bidding on public construction projects. The Assembly version was released from the Labor Committee and awaits action by the full Assembly, while the Senate version is in the Senate Labor Committee.

Opportunities Bill Advances

Assemblyman Albert Coutinho is sponsoring legislation (A-3680) that would merge five state tax-incentive programs

into two, with one focused on job creation and the other on economic development. The bill, known as the New Jersey Economic Opportunity Act of 2013, expands two economic development incentive programs administered by the N.J. Economic Development Authority. The Grow New Jersey Assistance Program would be the state's premier business attraction and retention incentive. This legislation revamps and streamlines the state's economic development tax incentives, thereby boosting New Jersey's job creation efforts. It is also hoped it will help retain existing businesses and manufacturers and attract new ones.

This bill would help level the playing field between New Jersey and surrounding states in terms of the financial incentive programs being offered. Many developers, business organizations, labor unions and planning groups support this bill, which recently passed the Assembly and now moves to the Senate for consideration.

— Mark Longo

BENEFITS

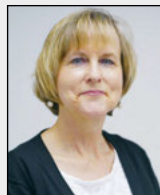
Health Fairs:

Sept. 18: 3-7 p.m. Holiday Inn

68 Crystal Run Road, Middletown, NY.

Oct. 18: 3-7 p.m. Runnemedede Inn &

Suites, Runnemedede, NJ



Good Nutrition & Weight Loss Key to Job Longevity and Beyond

From Operating Engineer, Winter 2013

As Operating Engineers, we work a lifetime of long, physically demanding hours often in remote locations away from home. With this lifestyle we work up a strong appetite that is too often satisfied by supersizing our burgers, fries, sodas or adult beverages at the nearest fast food joint or watering hole. We don't eat properly, we don't have the energy or time to exercise properly and getting a decent night of sleep can be a challenge.

In other words, we work hard, we play hard and we eat and drink too much.

Early in our careers we can seemingly get away with these routines, but as we age and our systems start their inevitable slowdown our once buff, hard bodies start to soften. The calories we are accustomed to consuming and burning off are now expanding our waistlines and adding extra

pounds to our frames.

Unfortunately, this added weight not only makes it increasingly difficult to fit into that old varsity jacket, it also results in the development of a number of chronic conditions, too numerous to list here, that will impact your life financially and qualitatively as well as the lives of those loved ones in your family.

For many of us these habits are very hard to change, but if you want to be around for the long haul and enjoy that well deserved pension, make the effort. A comprehensive set of resources that will aid you in making these difficult lifestyle decisions can be found online at www.nutrition.gov under the nutrition and health issues section. So what do you say, give it a try!

— Christine Medich

COMMUNITY

State & Local Races

It has been an eventful summer this year in New Jersey as we have added to the electoral calendar with a special election to fill the seat of the late Senator Frank Lautenberg, who died in June. The special election will take place on October 16 and will be followed with the regular election on November 5.



On the local level we are working to continue to build stronger relationships with municipal decision-makers and help to support officials who keep the concerns of working families at the forefront. In Jersey City, our endorsed candidate, Steve Fulop was victorious and took office on July 1. Mayor Fulop is already hard at work making his plans for Jersey City a reality.

In our largest city, Newark, we have endorsed Councilman Anibal Ramos for mayor. Councilman Ramos has a proven record of public service and is committed to encouraging economic development throughout the city. He has worked to attract investment and improve infrastructure. Newark's position as a regional transit hub gives it great potential for growth and Councilman Ramos understands that good jobs for working families are vital part of its future.

We hope you all exercise your right to vote on October 16 and again on November 5.

— Erin Rice



**International Union of
Operating Engineers Local 825**

65 Springfield Avenue, 3rd Floor
Springfield, NJ 07081
(973) 671-6900
(973) 921-2918 FAX
www.iuoe825.org

Non-Profit Org.
U.S. Postage
PAID
???, NJ
Permit No. ???



A 98 Link-Belt crane digging ditch across McCormack Lake.

Better Building Begins Here

Vote Booker on Oct. 16



In addition to the regularly scheduled Election Day on November 5, New Jerseyans have the opportunity to vote in a special election on October 16 to fill the seat left vacant by the death of Sen. Frank Lautenberg.

Based on the results of the August 13 primary, the race will be between Democrat Cory Booker and Republican Steve Lonegan.

While Mayor Booker is supportive of Davis-Bacon and PLAs, Lonegan has gone on record against them. Lonegan's camp may be hoping that a light voter turnout will work in his favor. We can't afford to take that chance. Don't sit this one out ... make sure you vote on October 16, and then again in the general election on November 5.

A.C. Convention Center

Harrah's, which is owned by Caesars World Inc., has begun construction on a 250,000 square-foot convention fa-



cility designed to complement the Atlantic City Convention Center and attract corporate meetings, conventions and tradeshows. It will include two ballrooms, each featuring 50,000 square feet of space.

The project is estimated to cost \$125.8 million, of which Caesars will contribute \$80 million. The Casino Reinvestment Development Authority will put another \$45 million in public funding into the project.

Triple Five takes step toward American Dream

Developer Triple Five has officially taken control of the failed Xanadu project after closing on a deal that transferred the rights to the Meadowlands property from the lenders who have held it for nearly three years.

In May, the agency overseeing the Meadowlands Sports Complex voted to allow the lenders to transfer the property's ground lease and development rights to Triple Five. Plans for the long-stalled retail and entertainment mega-project have moved ahead in recent months despite a pending lawsuit with the New York Giants and Jets, who oppose an expansion they say would cripple traffic around MetLife Stadium.

The transfer comes a decade after Xanadu's original developer, Mills Co., broke ground on the now-infamous project.