

Veteran operating engineers provide valuable expertise

Our full-time training staff members are Keith Adolf (apprentice coordinator/instructor) William Byrnes, William Lacass, George Wallis, Ed O'Herron, Rod Piper, William Davis, Christopher Rumsey and Paul Chowansky, who worked for many years as a crane operator for United Crane Rentals in Kenilworth. Today he works with Local 825's Keith Adolf to pass along his knowledge and techniques to a younger generation of pile drivers and crane operators.

In winter we also bring in several members as temporary trainers. Other instructors come from outside the ranks of Local 825 and are valued for their own varied work experiences.

A Focus on Safety Don't leave anything to chance

Safety comes first. We teach OSHA safety training all the time. We tailgate before each job and go over everything we need.

- We plan out the construction site.
- We make sure everyone has the proper clothing, especially for milling and paving. For night work, you need to ensure visibility.
- You need to have a focal area for contacts, so that everyone knows what to do and who to contact in an emergency.

Safety-specific topics focus on signaling and rigging, OSHA requirements, HAZMAT safety, disaster site work training and CPR training. We also provide training on lifting, fall prevention and signs and labels.

With so much that could go wrong, you can't leave anything to chance. *Productivity means more than getting the job done efficiently, it means that no one gets hurt in the process.*

7 apprentices complete training

Congratulations to our newest journeymen, who completed their training in 2011 and were recognized for their achievement at the semi-annual meeting in January.

The newest journeymen are: Michael Frawley, Vincent Lopiccolo, Geoff Kaplan, Kenneth Riley, Andrew Bohm, Kaleem Mohammed and John Cinelli.

Apprenticeship requires a minimum of 144 hours of classroom and hands-on training each year. After the training, apprentices are available for work at the trade and must have approximately 1,500 hours of work experience each year before they can advance to the next level of apprenticeship.



(Left to right) Local 825 President John Wood and Business Manager Greg Laveve congratulate Kaleem Mohammed.



Ed Kalinowski, Joe Ballantine, Mike Grace and Pat Rafferty

NJ Task Force 1 – Preparing for the worst

The Local 825 assists NJ Task Force 1 by hosting training search and rescue exercises to find and free victims trapped in structurally collapsed buildings.

Local 825 stages various disaster scenarios to practice and maintain skills and capabilities in technical rescue training. This requires continual preparation for any incidents that require assistance beyond the capability of local emergency services, such as natural or man-made disasters, hurricanes, floods, conflagrations, explosions, earthquakes or weapons of mass destruction.

"We did one in Lakehurst with a bridge collapse and we did a simulated terror attack at Newark Airport," said Al Zabicki. "It involved us, police, fire, hospitals, triage units and various other support groups. There is one scheduled to take place in the Meadowlands."

No one likes to think of worst-case scenarios but it's nice to know that provisions are in place to help, should they ever occur.

Contact Information

Local 825 Headquarters
65 Springfield Avenue, 3rd FL
Springfield, NJ 07081
(973) 671 - 6900
(973) 921 - 2918 FAX

District Offices:
5 Allison Drive
Cherry Hill, NJ 08003
(856) 470-1480
(856) 470-1485 FAX

6 Wesley Court
Middletown, NY 10941
(856) 674-9020
(845) 674-9025 FAX

Health & Welfare office
65 Springfield Avenue, 2nd FL
Springfield, NJ 07081
(973) 671 - 6800
(973) 921 - 0706 FAX

Training
338 Deans Rhode Hall Rd.
Dayton, NJ 08810
(732) 798-2170
(732) 798-2175 FAX

NY Training Center
6 Wesley Court
Middletown, NY 10941
(845) 692-3393



International Union of
Operating Engineers Local 825

65 Springfield Avenue, 3rd Floor
Springfield, NJ 07081
(973) 671-6900
(973) 921-2918 FAX
www.iuoe825.org



Better Building Begins Here

ViewFromTheTop

Continued from page 1

ter. Al Zabicki, a veteran of Local 825 and member of our Executive Board, has assumed the top spot of Director. This issue of Local 825 News tells you more about Al and the changes that are taking place.

Our training centers are a centerpiece in an ongoing effort to keep our engineers the most skilled and the most sought after in the country. Along those lines, I'd like to extend my congratulations to the seven apprentices who graduated in 2011. See who they are on page 5.

I also want to thank all of you, our members, for voting to expand the Local 825 Scholarship program. If you have a child or grandchild who is a high school senior, be sure they take advantage of this opportunity. See the Scholarship story above right.

Meanwhile, we'll continue to keep you updated on the latest project information and upcoming opportunities. Don't forget to check our Facebook page and click "Like" to receive frequent updates.

PRESORTED
FIRST-CLASS MAIL
U.S. POSTAGE
PAID
TRENTON, NJ
PERMIT No. 964



825 News

SERVING THE LOCAL 825 MEMBERS OF THE INTERNATIONAL UNION OF OPERATING ENGINEERS

VOL. 2 ISSUE 2

825 Calendar

MARCH	
5	District 1 Meeting: Elk's Lodge – Toms River, NJ
7	District 2 Meeting: Doubletree Hotel – Princeton, NJ
12	District 3 Meeting: Holiday Inn – Mt. Olive, NJ
14	District 4 Meeting & Blood Bank (2-7pm): Holiday Inn – Middletown, NY
APRIL	
2	District 1 Meeting: Knights of Columbus – Williamstown, NJ
4	District 2 Meeting: Ramada Plaza Hotel – Newark, NJ
9	District 3 Meeting & Blood Bank (4-7:30pm): Russian Hall – Garfield, NJ
11	District 4 Meeting: Holiday Inn – Middletown, NY
13	Scholarship Applications Due

Training is more than an activity – it's what sets us apart

Heavy Equipment training is not just an activity. It's an essential part of who we are.

Whether you're moving tons of earth on the ground or steel overhead, the risks are enormous. That's why contractors and project owners look for the most highly trained and most experienced engineers available. They want their investment to be handled safely and efficiently. That's why they select Local 825 Operating Engineers.

The high level of training provided to Local 825 members is a critical part of our identity. It is what sets us apart.

For that reason, we must continually



Greg Laveve
Business Manager

ensure that our equipment and our training are refreshed with the latest in technology and techniques. Our training facilities stack up favorably against any training yard in the country. In addition to the pieces of heavy equipment, we have 38 acres of field space.

Our instructors come from our own ranks and also from the heavy equipment manufacturers. Combined, they have years of experience to offer apprentices and seasoned operators who want to

upgrade their skills.

In the past few months we have made some important changes at our training cen-

Continued on p 6 (back cover)

Al Zabicki climbs into training center's big seat

When Al Zabicki joined Local 825 in 1985, he never dreamed he'd some day be training the next generation of Operating Engineers.

For 27 years, Al operated bulldozers, front-end loaders, excavators, rollers, millers and pavers. "Just about everything," he says. He participated in highway construction, Turnpike widening, the expansion of I-287 and Rt. 440 in Jersey City. He built schools, capped landfills and routinely redid the Meadowlands Race-track, changing different types of turf to accommodate the different races.

The appointment is significant for Local 825 because:

- It recognizes Local 825 as a representative voice of labor and the transportation industry in New Jersey.
- It provides "a seat at the table" during discussions on how capital funds are allocated for transportation construction projects and how the DOT spends its money.

The approval follows a vetting process that followed the governor's nomination of Greg in June.

Over those years, Al's seen the changes that have taken place in equipment and technology. He always



Al Zabicki at the controls.

made it a point to keep his own skills up to date, taking advantage of the Local's 38-acre facility.

In 2011, Al was tapped to breathe new life into the all-important training program. Not surprisingly, his vision is to help the Local and its members keep up with

changes that are coming quicker and quicker than ever before. Just keeping up with the innovations in GPS technology and the different certifications required today takes a lot of planning and attention, but it's so important.

"Every day is a challenge. It's either keep up with the changes or become a dinosaur," Al says. "If you want to be the best at what you do, the choice is obvious."

Training Shape Up

Winter's the best season to build skills



OUTDOOR TRAINING

Seasoned Operating Engineers provide the training on a 38-acre site, offering courses outdoors and indoors. Outdoor training includes earthmoving, excavation, guardrail installation and the following:

Crane Operator Training

Crane operator training covers both fixed cab and swing cab mobile hydraulic cranes. We have telescopic boom cranes, lattice cranes and a tower crane and crane simulator. This year we will begin to offer the Operating Engineer Certification Program (OECF).

Pile-Driving Training

This program provides knowledge and skills needed to handle piles, drive piles and determine capacity. There is the proper equipment and an emphasis on safety.



Winter months are a good time of year to train without interfering with work opportunities.

Local 825's training program is comprehensive, providing the skills to operate the full range of heavy equipment expertly and safely.

Pipeline Training

Pipeline training covers general pipeline construction practices, hand signals, the clearing process, digging and grading procedures, side boom operations, restoration techniques,



the different language that is used in pipeline construction and the history of the pipeline industry.

Although we use CDs and photos from various jobs, our goal is to put trainees in the seat doing the job, to instruct the engineers by practicing the operation using angle dozers, excavators, side booms and John Henry drills.

We teach how pipe is lowered into the ground using multiple side booms. We practice by getting students to hoist pieces of old concrete bridge beams using two side booms, then carrying them around competently and safely. We sculpt hills and make them go over and around the hills carrying the "pipe," in the same way they would on an actual job.

Training instructors must be qualified and study in Beckley, West Virginia, which employs professors in the areas of HAZMAT, asbestos removal and industrial hygiene. The training facility is on the same grounds as the Mine and Safety Academy, which also employs professors from the University of West Virginia to do the training.



Rigging/Signalperson Training

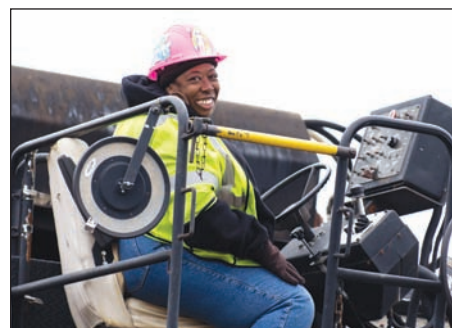
A crane rigger selects wire rope or synthetic slings (according to rated capacity), determines correct hitch configurations and learns how to select the proper rigging hardware, such as shackles, eyebolts, etc., according to weights and sizes of loads.

They attach loads to rigging to provide support or prepare them for moving. They must also signal or verbally direct operators who hoist and move the loads in order to ensure safety of workers and materials.

Employers must ensure that each signalperson meets the qualification requirements. Our training prepares members for certification under OSHA CFR standards.

Commercial Driver License (CDL) Training

A CDL is required to drive certain trucks and equipment on public roads. Heavy equipment operators and mobile crane operators are



required to have a CDL, Class-A (articulate) or Class-B (straight axle) license.

Milling, Paving & Finish Roller Course

We help our Operators stay current on the latest highway-class milling machines and asphalt pavers available today along with our finish roller course.

GPS

GPS technology is constantly changing, requiring that we stay current with the latest programs.

GPS guides equipment to design grade at much faster speeds, adding to productivity, efficiency and savings. It is also used across the wide range of construction activity.

HAZMAT Training

The overall impact from this program provides workers in an at-risk population



nationwide with training that enhances jobsite safety and the ability to meet the challenges of the changing work environment.

Local 825 instructors have been trained under the IUOE National Training Fund National HAZMAT Program, with support under the National Institute of Environmental Health Sciences (NIEHS) federal program.

* * *

Indoors, the training center shop is large enough that most equipment and simulators can be brought indoors for any type of repairs or training. We have indoor classes in mechanics, welding and burning – mig flux core & stick welding and plasma arc cutter & oxy acetylene burning.

The training center also arranges offsite training at various jobs for a variety of activities, such as rigging or HAZMAT training. Occasionally business agents or engineers request instructors come out to a jobsite to provide expertise or to observe an operation.



Glynn Dubil, John Rocco, Adam Snover, Terrance O'Brien, Jared McCaffrey, Mike Sinkbiel

A new meaning for Night School

Since a lot of paving and milling are done when there are fewer cars on the road after dark, it is necessary to train at night. Winter is also a good time to do this since darkness comes as early as 5:30. Night classes cover all the safety procedures that are essential after dark, including wearing the proper clothes, illuminating the work area and the equipment, and placing warning signs to alert approaching traffic. The training is not just for paving. It also applies to other types of work performed after dark.

"HANDS-ON" HEAVY EQUIPMENT

It used to be that you could train on the worksite. Today, that's no longer true. Because of safety and productivity concerns, contractors demand experienced workers, day one.

But "hands on" experience is still available at Local 825's training center in Dayton. There are more than 90 pieces of equipment, ranging from cranes, bulldozers, scrapers, excavators, loaders, backhoes and more. In addition to what we own, signatory contractors periodically provide newer pieces for us to train on.

- We have equipment for earthworks, milling and paving from **Foley, Inc.**, a Piscataway Caterpillar dealer.

- **Wirtgen** provides training on Hamm Rollers, milling machines and Vogele pavers. The machines are loaned to us by signatory contractors, such as Tilcon, Crisdel, Schifano, and Jessco.

- Pipeline equipment is provided by **Henkels and McCoy** and **Napp-Grecco**.

- **Cleary**, which sells Global Positioning System (GPS) technology, loans us their newest systems. They've added a base station, data collector and a rover so we can address the needs of our surveyors.

- **Highway Safety Systems**, donated a guidepost pounder and a representative to train on guardrail operations, such as how to set pins, how to string the lines, and everything, right up to sitting in the seat and running the equipment.

Many of these tools pick up signals from a satellite and transfers them to a computer on the equipment. This stakes out precise locations for the operator to guide the equipment. Even guidepost pounders use GPS coordinates to install guardrails in exact locations along the highways.

With so much invested in heavy equipment, contractors are happy to loan it to us for training so they can be sure it's operated with precision on the job.



Training Classes

All classes are held at the New Jersey Training Center, unless otherwise noted.

COURSE DATE **TIME**

40-Hour HAZMAT Classes

NEW YORK 7 a.m.
Thursday: March 1
Friday: March 2

NEW JERSEY 7 a.m.
Monday: May 14
Tuesday: May 15
Wednesday: May 16
Thursday: May 17
Friday: May 18

CCO Written Training Classes

Saturdays: March 3, 10, 17, 24 8 a.m.
April 7, 14, 21, 28

Signalperson Qualification Class

Saturday: March 3, April 7, May 5 8 a.m.

HAZMAT Refreshers

NEW YORK 7 a.m.
Saturday: March 10, 24
Wednesday: March 14, 28, April 11, May 16

NEW JERSEY 7 a.m.
Saturday: March 10, 24, April 14, May 5

OSHA 30

NEW YORK 8 a.m.
MOD 1 Monday: March 19
MOD 2 Tuesday: March 20
MOD 3 Wednesday: March 21
MOD 4 Thursday: March 22

CCO Written Certification Exams

Sunday: March 25, April 29 8 a.m.

Qualified Rigger Class

Saturday: April 21, May 12 8 a.m.